

Cleaning Technology  
Municipal Technology  
Waterjet Technology

**Hako**



# Scrubmaster B75 i

Technology that understands!

The autonomous scrubber-drier

### Intelligent, efficient, autonomous and manual

For short cleaning jobs in between, the Scrubmaster B75 i can also be operated manually as a conventional walk-behind scrubber-drier – and is particularly ergonomic thanks to the extendable handle.

## SCRUBMASTER B75 i

### Quickly changed

The automatic tool-free brush ejection and pick-up system simplifies regular servicing of the machine.



### High-tech – easily accessible

All components are easy to reach. The recovered water can be drained effortlessly via the flexible waste water hose. The generously dimensioned recovery tank opening facilitates tank cleaning.

## Learns fast, cleans faster

The new Scrubmaster B75 i cleans taught routes independently, reliably and safely. The 3D camera system and certified LiDAR sensors not only enable reliable obstacle detection and efficient navigation, but also compliance with safety standards. Operation via the clear 8-inch LCD panel is simple and intuitive. The Scrubmaster B75 i increases productivity as it can perform cleaning tasks at any time of the day or night – particularly efficient, saving time and resources.



Turning circle  
d = 130 cm  
L = 105 cm



### Perfect for every environment

Depending on the floor conditions, the Scrubmaster B75 i is available as a version with a 3-disc brush system for gentle wet cleaning or with a cylindrical brush for sweeping and wet cleaning in one pass.

### The highlights

- Autonomous driving and cleaning with innovative, image-processing technology
- Simple, intuitive route learning
- Compliance with safety standards
- With disc or cylindrical brush system
- Can also be used as a conventional walk-behind scrubber-drier
- Ergonomic in manual operation





**Safety without compromise**

Through compliance with the safety standards, elaborate test procedures and the support of digitalisation expert Bosch, the Scrubmaster B75 i offers the highest level of safety.

Side cameras

Top camera

LiDAR sensor

Bottom camera

Dock eye (coupling for water, electricity and communication incl. waste water drain/valve)

LiDAR sensor



**Autonomous – and safe!**

Reliable safety sensors, 3D cameras, collision protection systems and defined tolerance ranges ensure that the Scrubmaster B75 i reliably detects and avoids people and objects. Thanks to its “contact-free travel” capability, it complies with the current safety standard EN IEC 63327 for autonomous cleaning machines in commercial use. The taught routes and the data collected during the cleaning journey are safe: all EU regulations are complied with during storage and evaluation!

**Safety made by Hako**

The inhouse-developed software “made & locate in Germany” meets all requirements for security and data protection – also in the future: because the rights are held by Hako. All data is stored on European servers. Further measures, such as the targeted pixelation of the video material used before storage for analysis in the event of an error, also contribute to data protection conformity.

**The machine always decides in favour of safety!**

When the Scrubmaster B75 i approaches an obstacle – for example, a vehicle crossing the path – the machine slows down or completely stops. Once the object moves away or has left the defined protection zone, the machine resumes its normal working speed. If an unforeseeable object appears in front of the machine – for example, if a person suddenly jumps in front of the machine – the machine stops immediately.

**Safety benefits at a glance:**

- Certified LiDAR sensors for personal protection as well as obstacle and fall detection
- 3D camera system
- Optical signals such as flashlight and LED strips
- Data protection through pixelation
- CE marking and conformity to standards

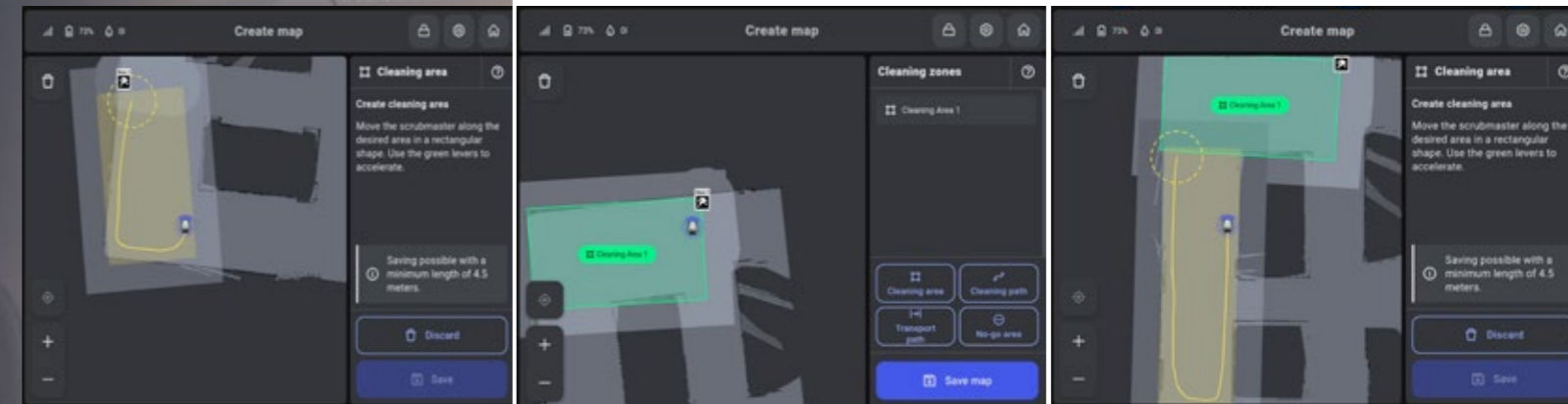




The future is this simple  
the 8-inch LCD panel clearly  
displays all relevant information and  
is easy and intuitive to operate.

### True to track

Autonomous cleaning systems follow the learned route with high repeat accuracy. This not only results in improved cleaning results, but also significantly reduces water consumption as well as the consumption of chemicals, electricity and materials.



## The optimal combination of man and machine

Employing the Scrubmaster B75 i relieves the cleaning staff, because the machine takes on recurring tasks and carries them out with high efficiency and consistently good cleaning results, even over long periods of use. Mapping technologies allow routes to be recorded and stored during the cleaning journey. An 8-inch touchscreen functions as a smart interface to the user: the machine can be intuitively operated and programmed via the display. All operating elements are optimally arranged and the symbols are easy to understand to ensure that new operators can be trained quickly.



### Teach-in

To teach the Scrubmaster B75 i a new route, the operator first walks behind the machine. Before the Scrubmaster B75 i can start autonomous cleaning on an unknown route, the cleaning journey has to be completed manually once. The values recorded during the "teach-in" are converted into an optimal route for autonomous cleaning. Afterwards, the autonomous cleaning process can be carried out an infinite number of times at the push of a button.

### Auto-fill-in

In auto-fill-in mode, the user defines a perimeter while driving manually. The Scrubmaster B75 i then cleans the entire area independently, with an optimally adapted driving strategy - for example, when there are obstacles or a high degree of soiling. This saves time and effort!

### Benefits for the operator:

- Simple and intuitive operation via the 8-inch LCD panel
- "Teach and repeat" function for high repeat accuracy of taught routes
- "Auto-fill-in" function for systematic cleaning within a defined radius
- Consistent cleaning routes even with changing operators

Technical data Scrubmaster B75 i		
Theoretical area output	Disc brush Cylindrical brush	2,340 m <sup>2</sup> /h 1,980 m <sup>2</sup> /h (without side broom)
Working width	Disc brush	65 cm (3-disc brush unit for brushes and pads)
	Cylindrical brush with side broom	ca. 54 cm ca. 80 cm
Dimensions	Length	105 cm
	Width (above bumper)	74.5 cm
	Height at the operating handle	120 cm
Total weight max.		330 kg (depending on the battery)
Effective squeegee width		76 cm
Solution tank/recovery tank		75 l/75 l
Battery		Lithium
Theoretical running time (constructed)		120 to 180 min (depending on the battery)
V/max (autonomous)		ca. 3.6 km/h





**Simply pushes aside coarse dirt**

Optimum cleaning results can be achieved at all times, even in areas with a large amount of coarse dirt, without impairing the autonomous cleaning, simply by equipping the Scrubmaster B75 i with the optional Clean Guard front shield. The convex-shaped front shield with flexible rubber strip pushes coarse dirt to the side and adapts to the ground even when driving on ramps. The front shield is easy to install – and can also be retrofitted to machines that are already in use.

**More productivity, less effort!**

With the Scrubmaster B75 i, Hako sets standards in terms of autonomy, efficiency and safety. To get the maximum out of all areas, the performance of the autonomous scrubber-drier can be increased even further with intelligent and perfectly matched optional equipment. For example, with optional extras for the highest standards of hygiene and cleanliness as well as even lower resource consumption, the docking station for battery charging, waste water draining and fresh water filling, and the Clean Guard front shield for excellent cleaning results even in areas with an increased amount of coarse dirt.



**Gets itself ready for the job**

To further relieve cleaning staff and protect them from coming into contact with potentially contaminated liquids, Hako is developing a docking station especially for the Scrubmaster B75 i. The scrubber-drier will automatically drive to the home base for docking. The processes of waste water draining, fresh water filling and battery charging are started directly. The docking station can easily be retrofitted to existing systems.



**More cleanliness, less dust**

If the two side brooms of the cylindrical brush version are equipped with Dust Stop, the amount of dust and fine particulates generated during sweeping is significantly reduced compared to conventional side brooms.





## Hako-Fleet-ready!

Autonomous cleaning technology is intelligent. It is even smarter to monitor its use with Hako-Fleet-Management. The data obtained can not only serve as a basis for even more economical use, but also to always be one step closer to the solution whenever service is required.

The use of the machine can be tracked via the Hako-Fleet-Management tool. If a fault causes the machine to come to a standstill, its location on the map is sent to the Fleet Portal. Cleaning results and statistics are clearly displayed in the web portal.



### Hako-Fleet-Management: here's why!

- Recording of all important service data and operating states
- Clear presentation in the web portal, available 24/7
- Full cost transparency and control
- High machine availability
- Avoidance of machine damage
- Provision of performance records
- Compatible with machines from other manufacturers



## Service makes the difference



### Always quickly on site

Qualified service technicians with fully equipped service vehicles carry out service work promptly and efficiently directly on site.

### Overnight delivery

Excellent spare parts logistics with overnight delivery of spare parts.

### Service via scan

Full access to all machine details and data as well as digital service requests – simply via QR code scan.

### For maximum availability

To ensure that our machines perform optimally at all times, we offer customised and scalable services along the entire product life cycle.

- Right from the start: with solution-oriented advice directly on site as well as attractive financing and rental options
- After purchasing: with smooth procurement and provision including user training
- During use: with individual service contracts and 24/7 support for fast and professional troubleshooting, high efficiency and permanent machine availability
- At the end of the product's life: with take-back and recycling as well as machine upgrades





# Hako

## Sustainability starts today

That's why we incorporate our corporate responsibility into our machines right from the development stage, for example, with the new autonomous scrubber-drier Scrubmaster B75 i:

- With Hako-AntiBac® (standard): The fungus and bacteria growth-inhibiting tank feature ensures improved hygiene, less odour development and reduced consumption of disinfectants.
- With efficient technology: Thanks to the high repeat accuracy of the cleaning journeys, the Scrubmaster B75 i improves cleaning results while saving water, electricity and cleaning chemicals.
- With a focus on health: The Scrubmaster B75 i not only relieves the cleaning staff, but also minimises their contact with potentially contaminated liquids.
- With a view to the entire life cycle: When developing our machines, we think from start to finish – from production in modern plants to economical, environmentally friendly use and returning the machine at the end of the product's life.



Hako GmbH  
Hamburger Str. 209-239  
23843 Bad Oldesloe  
Tel. +49 4531 806-0  
[info@hako.com](mailto:info@hako.com)  
[www.hako.com](http://www.hako.com)



Blue Competence is an initiative of VDMA ([www.vdma.org](http://www.vdma.org)). By engaging in this partnership, we are committed to comply with the twelve sustainability principles applied in the field of mechanical and system engineering ([www.bluecompetence.net/about](http://www.bluecompetence.net/about)).