

Cleaning Technology
Municipal Technology
Waterjet Technology

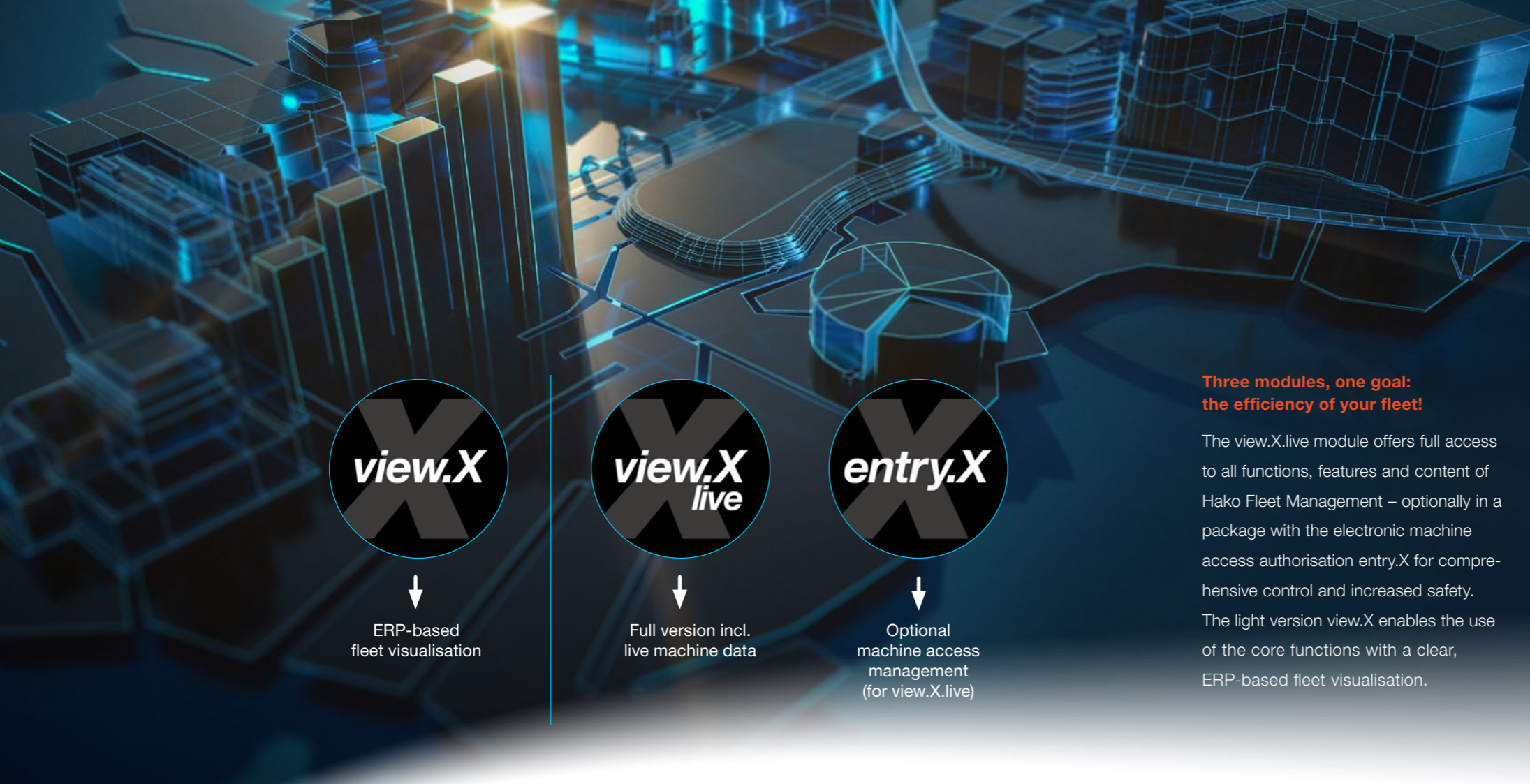
Hako



Hako-Fleet-Management

The Future of Fleet Management

More transparency, sustainability and economic efficiency



↓
ERP-based
fleet visualisation



↓
Full version incl.
live machine data



↓
Optional
machine access
management
(for view.X.live)

**Three modules, one goal:
the efficiency of your fleet!**

The view.X.live module offers full access to all functions, features and content of Hako Fleet Management – optionally in a package with the electronic machine access authorisation entry.X for comprehensive control and increased safety. The light version view.X enables the use of the core functions with a clear, ERP-based fleet visualisation.

From immediate support to predictive maintenance

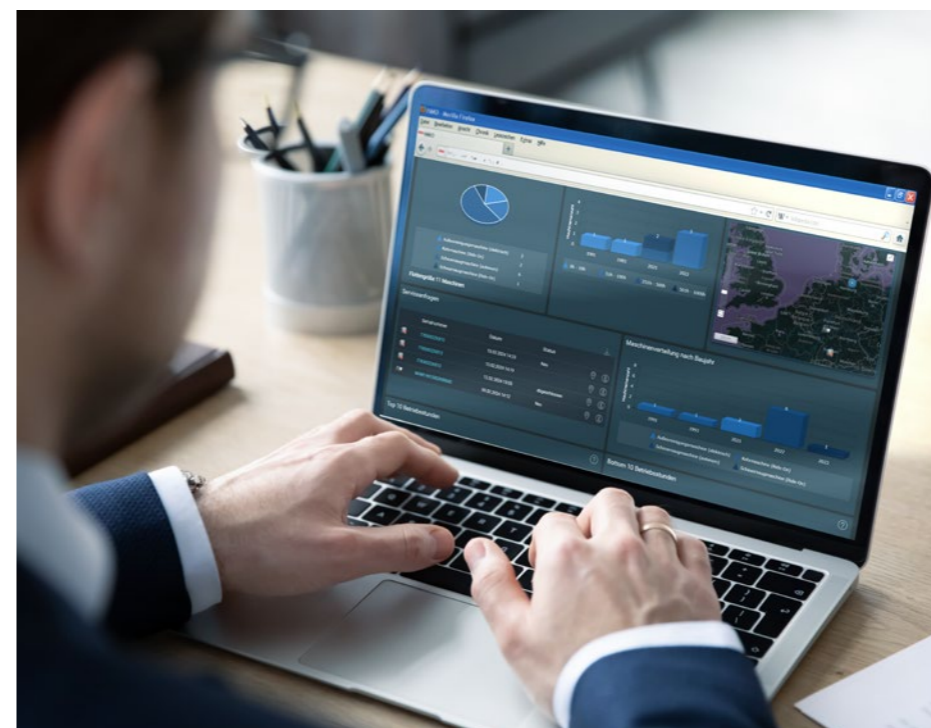
If the worst comes to the worst, service notifications can be sent directly from the portal. The current machine status and service codes are immediately transmitted to service technicians in your area – traceable for you in the system at all times. This means that an expert with the right Hako original spare parts is quickly at your site. With modern technology and data analysis, Hako Fleet Management can also predict maintenance requirements and act proactively before breakdowns occur. This increases machine availability, reduces service costs, extends machine life and thus contributes to the sustainability of fleet operations.



From real-time tracking to resource optimisation

As the size of the machine fleet increases, so does the importance of effective management. Hako Fleet Management helps you to manage your fleet efficiently, coordinate its deployment and keep an eye on all relevant key figures in real time. As a central machine management tool, it ensures fully automated transparency and provides the data basis for optimising the use of resources. For increased efficiency, reduced costs and more sustainable fleet management.

- The entire fleet at a glance – from anywhere, at any time
- Clear and transparent visualisation in the web portal – on your PC, smartphone or tablet
- Recording of all important cost, contract and service data as well as operating statuses while the machine is working



Hako-Fleet-Management – here is why

- Cost transparency and control
- High machine availability
- Prevents machine damage
- Performance records
- Efficiency analysis
- Optimised fleet management

Hako Fleet Management with a new dashboard: more functions, more usability, more options.



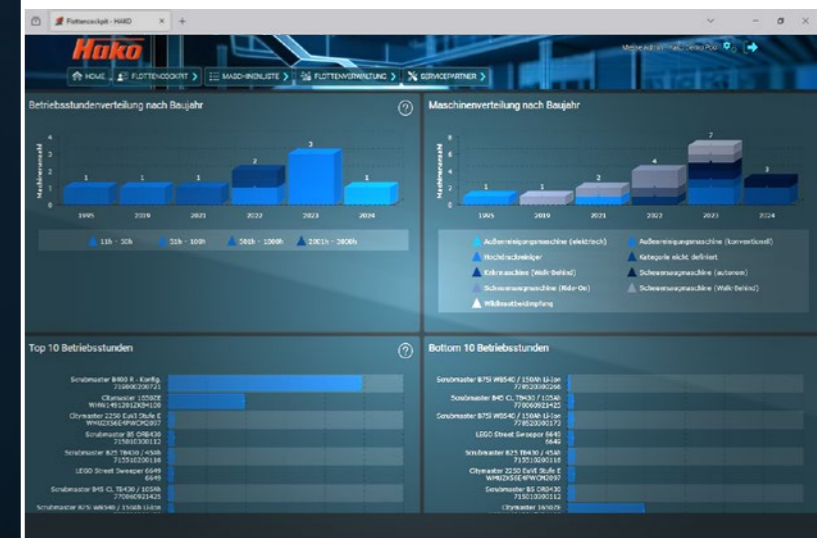
The **entry.X module** (optional) allows only authorised users to use the machine. By providing a structured usage framework, the electronic machine access authorisation helps to make fleet operation safer, more efficient and more cost-effective.

The **view.X.live module** makes organising the fleet both simple and efficient – with a modern, clearly designed user interface and optimised dashboard, clearly structured graphical display of information, rapid availability of data and detailed filtering options for optimum use and analysis of route information.

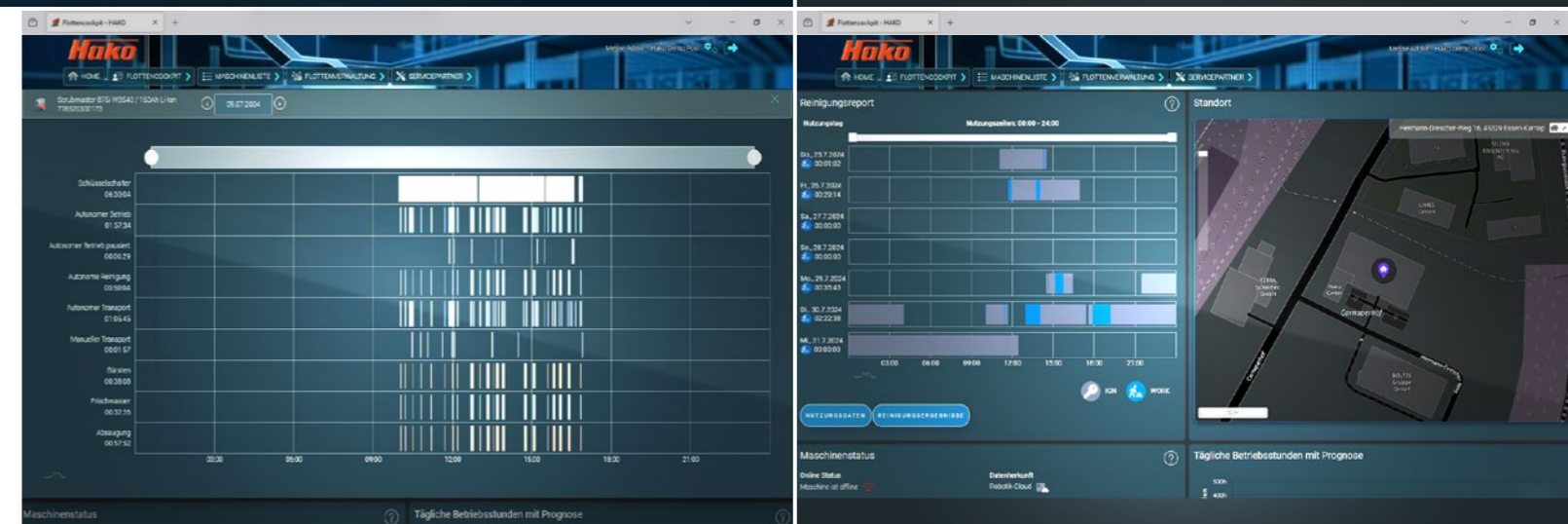


More graphics, improved visualisations and interactive analyses for faster insights

New fleet cockpit with a clearly structured layout



- Live operating times and statuses
- Location and route information (GPS)
- Cost/budget management
- Management of service and maintenance history
- Excel export including information on costs and operating hours
- Mapping of organisational structures with assignment of rights
- Maintenance and view of contract data
- Accurate hour-by-hour recording of operating times
- Notification when service and maintenance intervals are exceeded
- Live messages about availability with service and event codes
- Alarm function for recurring inspections/ maintenance
- Specially customised display for the Scrubmaster B75 i autonomous scrubber-drier with cleaning report and resource display
- Keeping performance records



What, when, how: the new cleaning report not only shows if and when a machine was used, but also how ...

and where: the route travelled by the machine (municipal technology) can be tracked precisely using an interactive map.



Everything at a glance:
Your ERP data – clear,
understandable and easily
accessible at all times.

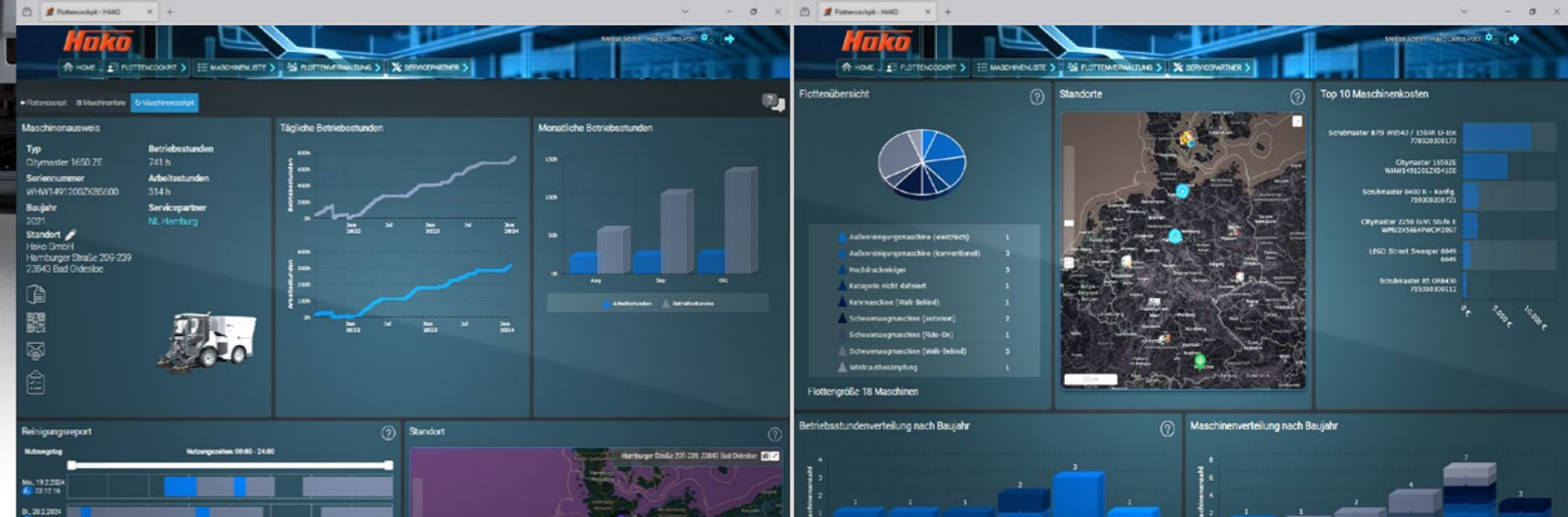


Using a standardised web service, Hako operating data can also be retrieved by third-party providers such as ToolSense. This enables the management of mixed fleets.



Scan and get started

Of course, only authorised users have access to Hako-Fleet-Management – your data is password protected. Existing users can log into the web application quickly and easily at any time and even load a widget page onto their home screen that can be accessed without logging in.



The module view.X supports economically efficient utilisation and management of your fleet. All evaluations are available online 24/7, and are easy to retrieve thanks to the tool's intuitive user interface.

- Cost/budget management
- Service and maintenance history management
- Excel export including information on costs and operating hours
- Mapping of organisational structures with rights allocation
- Viewing and maintaining contract data
- Pre-setting of recurring appointments
- E-mail notification in the event of changing machine conditions
- Service requests can be made (and traced) directly from the portal
- When service is required, direct transmission of machine status and service codes to regional service technicians

Don't miss a thing: with the machine ID for each vehicle, the exact display of operating hours, the live machine location* and the detailed mapping of machine utilisation.

Only the information you need: choose from various widgets exactly the displays you need to optimise your fleet – and use the interactive dashboard for further analysis.



Efficient management and utilisation of your fleet

Hako offers strong solutions to keep your fleet of machines safely under control. Whether you operate cleaning machines, municipal vehicles or a combined fleet of machines: Hako-Fleet-Management visualises each machine's current operational capability in real time to ensure maximum availability. All information is of course also available on your mobile devices, e.g. your notebook, mobile phone or tablet.

*Only in conjunction with view.X.live

Hako



Open for the future



The mobility shift from combustion engines to alternative drives such as electric motors, as well as the increasing demand for autonomous systems, are also changing the demands on fleet management. Which charging solution is the most efficient? How can processes be automated even further to optimise the use of labour? And which key figures will become relevant in the future? Hako-Fleet-Management already offers answers today.

The new autonomous scrubber-drier Scrubmaster B75 i is already Hako fleet-ready, e.g.:

- Clear display of the cleaning report
- Overview of autonomously cleaned areas
- Information on energy and fresh water consumption

This data helps to improve the cleaning performance of autonomous cleaning technology even further.

Hako GmbH
Hamburger Str. 209-239
23843 Bad Oldesloe
Tel. +49 4531 806-0
info@hako.com
www.hako.com



Blue Competence is an initiative of VDMA (www.vdma.org). By engaging in this partnership, we are committed to comply with the twelve sustainability principles applied in the field of mechanical and system engineering (www.bluecompetence.net/about).