

*Cleaning Technology
Municipal Technology
Waterjet Technology*

Hako



Citymaster 400

The power of small

*Multifunctional implement carrier
and sweeper in the 2-t class*



“Bigger than you think!”

CITYMASTER 400

Small all-rounder, great potential: The Citymaster 400 impresses with versatility and economic efficiency for a wide range of different jobs on outdoor facilities around the building. Thanks to its multifunctional design, the machine can be quickly and easily converted for sweeping tasks, green area maintenance and winter service, providing great working comfort for the operator.



The name reflects the aim

The Citymaster 400 is as compact as it is powerful, spacious and versatile: the “power of small” is evident in every application. The compact machine meets every challenge with high performance and exactly the right attachment or superstructure for the job at hand. And what’s more, well-thought-out details for back-friendly, fatigue-free working ensure a happy driver.



The smaller, the more agile

This also applies to the turning circle of only 1.20 m, which enables optimal steering and manoeuvring.



Gets you anywhere

The Citymaster 400 is perfectly dimensioned to ensure it can be transported quickly from job site to job site on a trailer.

Your benefits for comfortable and safe working:

- Spacious safety cab with heating and air conditioning*
- Height- and tilt-adjustable steering wheel
- Air-suspended comfort seat*
- Individually adjustable control armrest
- Fully suspended chassis with all-wheel drive and independent wheel suspension
- True-to-track, symmetrical steering system
- Quiet, low-emission petrol engine
- Tool-free, back-friendly changing of implements and attachments
- Rear-view- and suction mouth camera*
- Working lights all round*

* optional

Small is the new Big!

A compact powerhouse for all-season use – and a spatial prodigy for the driver: The Citymaster 400 is highly functional and at the same time comfortable and user-friendly. Our dual-benefit solution supports the driver in his daily work to ensure excellent results.

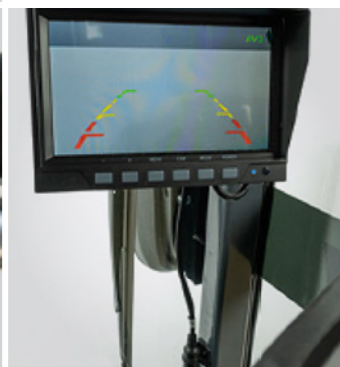


Made for the driver: height adjustment, back rest adjustment and an ergonomic design for comfortable, back-friendly sitting.



Quickly ready for the next job

Attachments and superstructures can be changed by the driver without tools. For example, the Citymaster 400 is quickly and easily refitted to complete different tasks on the same working day.



Everything in view, everything under control

For even greater working comfort, the steering wheel can be adjusted in height and tilt. An illuminated display integrated into the instrument panel provides information on relevant operating states. All functions can be controlled quickly and easily via the clearly arranged control armrest. Large windows with excellent all-round visibility increase working safety. Just like the optional rear-view camera, which helps the driver to keep a good overview at all times, even in difficult situations.

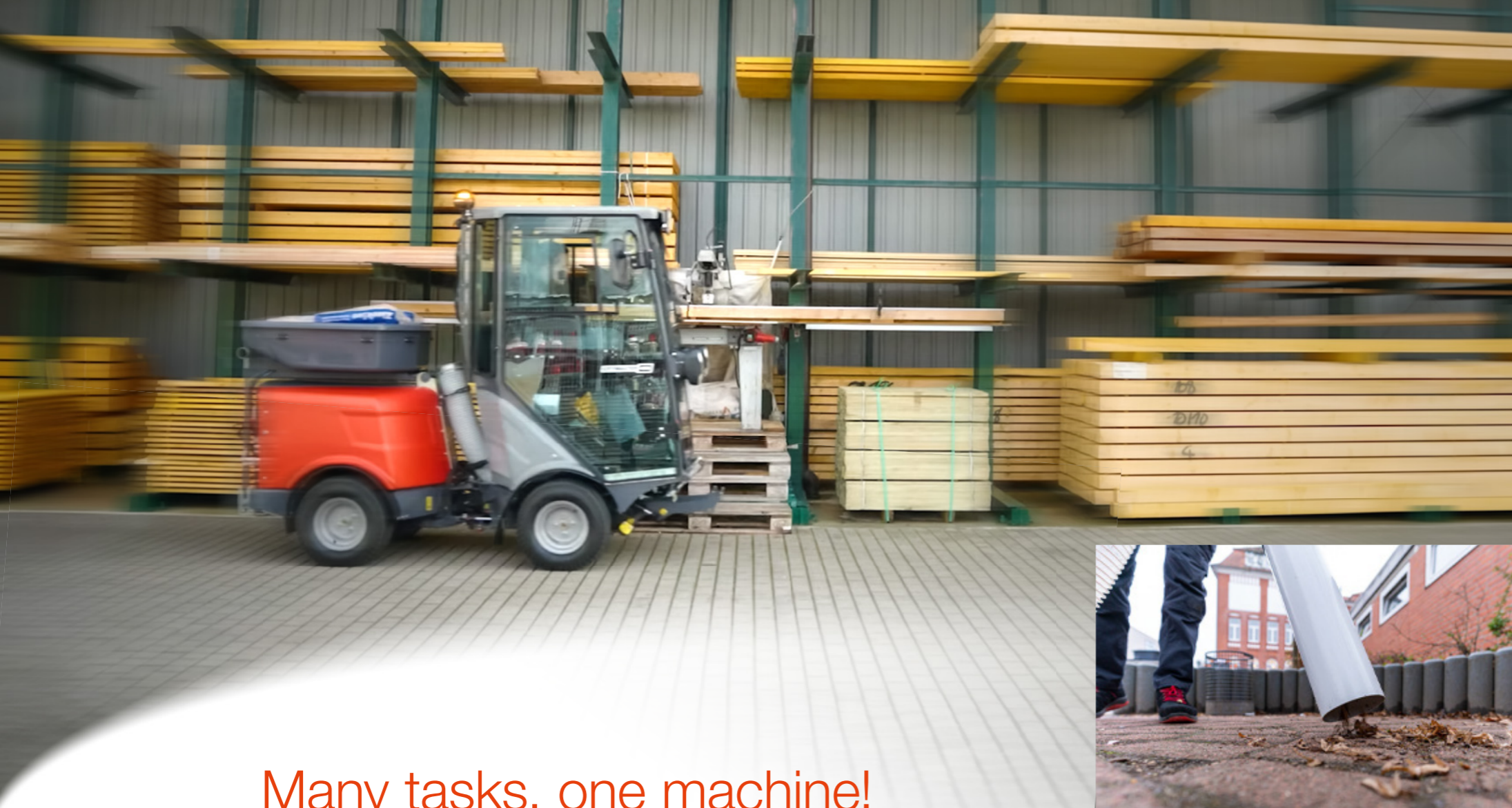


Reduces fine particulates:
The patented water circulation system effectively binds dust and fine particulates when sweeping, which has been confirmed by the independent EUnited test.

Powerful environmentalist

The Citymaster 400 meets the Euro V emission standards for significantly reduced pollutant emissions. The electronically controlled engine makes optimum use of fuel and thus reduces petrol consumption – saving costs and protecting the environment.

Technical data Citymaster 400	
Engine	petrol 23.4 kW
Drive	Hydrostat 4x4 / 0-25 km/h
Chassis	full-suspension chassis, articulated steering
Interfaces / attachment points	quick-change system / 3
Hydraulic system (working circuits)	2n / 48 l/min / 180 bar
Dimensions basic vehicle (L x W x H)	2,637 x 1,137 x 1,998 mm
Weights basic vehicle	1,850 kg GVW / 665 kg payload
Sweeper:	
working width	1,550 mm
effective dirt hopper capacity	450 litres
total length	3,650 mm
payload	260 kg
Driving licence	Class B, EG/EC-standard



Many tasks, one machine!

The multifunctional Citymaster 400 can be equipped with various attachments for different tasks – always matching the season and, if required, on the same working day: for example, for transport, winter service, green area maintenance and sweeping tasks.



Reliably ensures clean surfaces: with hydraulically driven 2-broom sweeping unit and patented circulation water system for reduced particle and fine dust emissions.



The Green revolution

The Citymaster 400 is a true professional when it comes to green area maintenance. In combination with the mower deck and grass collection system, for example, it is a powerful lawn mower. Equipped with a weed broom for mechanical weed control, the machine is not only extremely thorough but also particularly user-friendly: the weed broom can be optionally equipped with a suction system for the dirt hopper.



Even greater on-the-job flexibility: With the optional hand-held suction hose, even areas inaccessible to the machine can be reached.



Quick and tool-free: easy implement change.



Green area maintenance



Sweeping



Winter service



Transport



Weed removal



Hako

Hako's all-round carefree solution

Excellent service provided by professionals – on site and in the workshop

Whenever service is required or maintenance is necessary, we ensure maximum availability of your machine with our German-wide service network and top-equipped, modern workshops at our subsidiaries and authorised Hako service partners.

- Product and service quality from a single source
- Maintenance and repairs in modern workshops by experienced, trained service technicians
- High efficiency through perfectly matched Hako original spare parts



Attractive financing alternatives

High-performance machines and excellent service in a complete package with fixed calculable costs over the entire period of use. Tailored to your individual needs and with maximum flexibility.



Leasing options – tailored to our customers' individual needs.



Rental contract ALL-IN-plus: financing, maintenance and insurance included!



Hire purchase – special monthly instalments, tailored to your liquidity.



Seasons – adapt your rent to your seasonal turnover.

Hako GmbH
 Hamburger Str. 209-239
 23843 Bad Oldesloe
 Tel. +49(0) 4531- 806 0
info@hako.com
www.hako.com



Blue Competence is an initiative of VDMA (www.vdma.org). By engaging in this partnership, we are committed to comply with the twelve sustainability principles applied in the field of mechanical and system engineering (www.bluecompetence.net/about).

In the interest of further technical development we reserve the right to colour-, structural or design modifications. Pictures may show optional equipment. The range of available products and services may vary from country to country.